



Aug 31, 2016

Team Memo # 0050

To All F4 Teams

Please see attached the following updates from Crawford

Bulletin F4.16.08.03 – Front wing gurneys

These are the only Front wing gurneys that are permitted to be run.

Bulletin F4.03.08.04 – Wishbone leg shrouds

These are the only wishbone leg shrouds that are permitted to be run going forward.

Bulletin F4.15.08.30 – Cooling duct screens

These are a recommended option that can be purchased from Crawford.



CRAWFORD F4

Bulletin F4.03.08.04

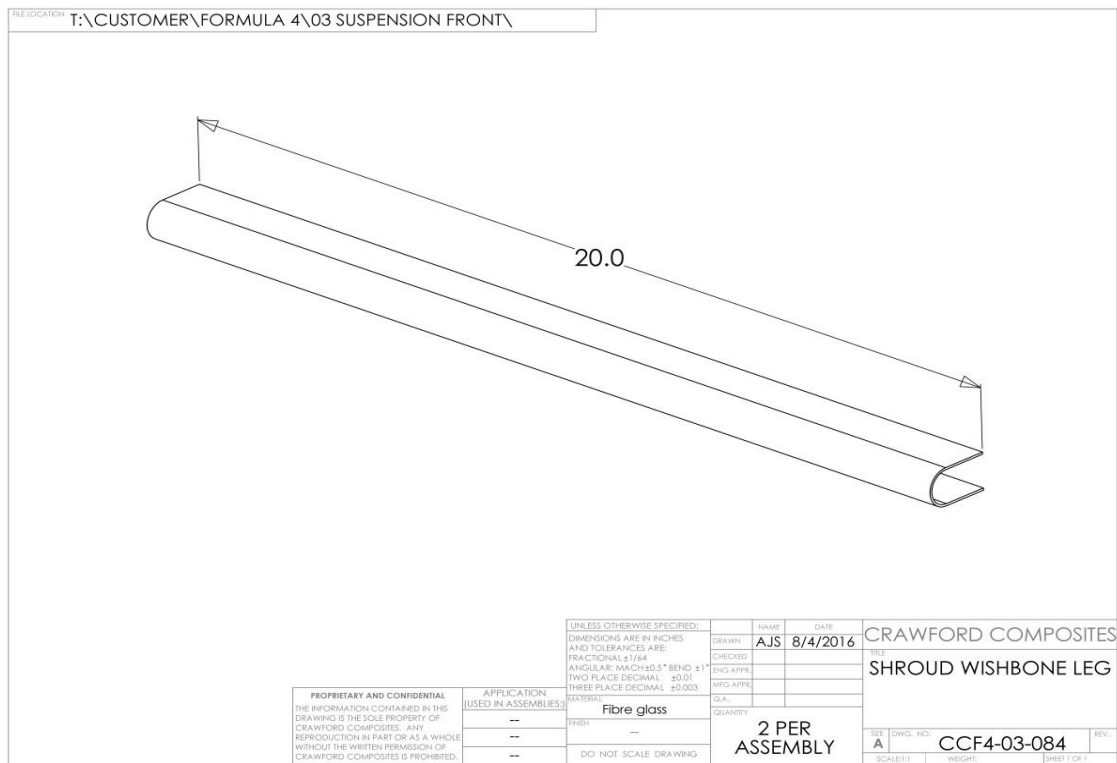
WISHBONE LEG SHROUDS

1 Available

Glass fibre wishbone leg shrouds

20" long

Contact Jake Poston for details 704 483 4175 x 2346



CRAWFORD F4

Bulletin F4.15.08.30

COOLING DUCT SCREENS

1 Available

Improved flow cooling duct screens

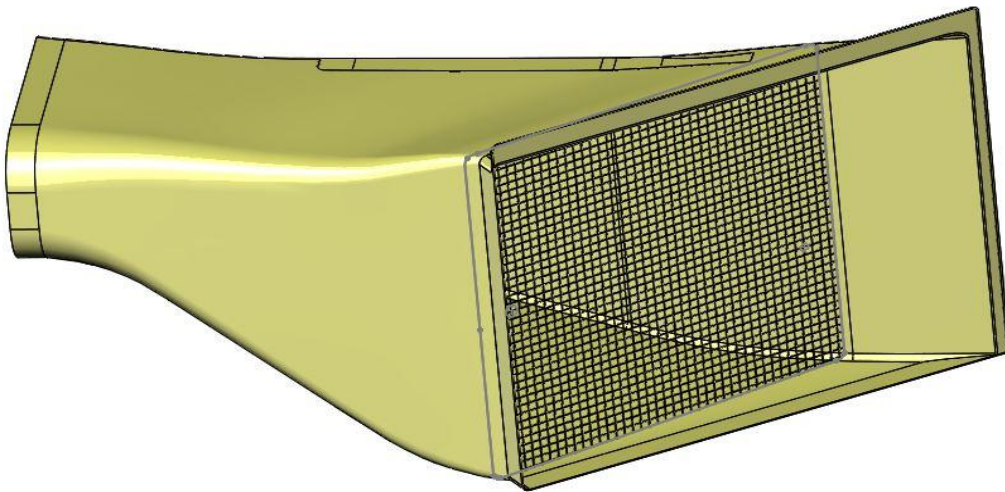
Back to back track tests confirm 10°C temp drop on water

CCF4-15-039_2 STONE GUARD LH Rev 2

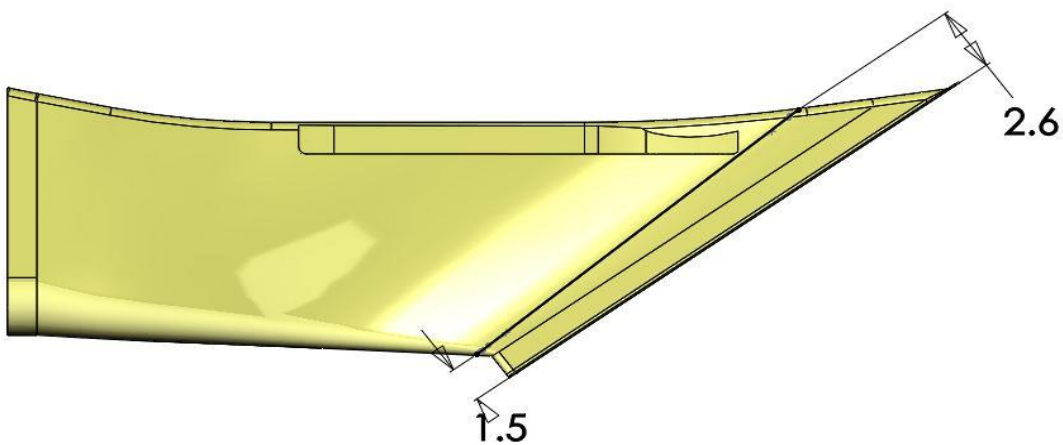
CCF4-15-040_2 STONE GUARD RH Rev 2

Contact Jake Poston for details /04 483 41/5 x 2346

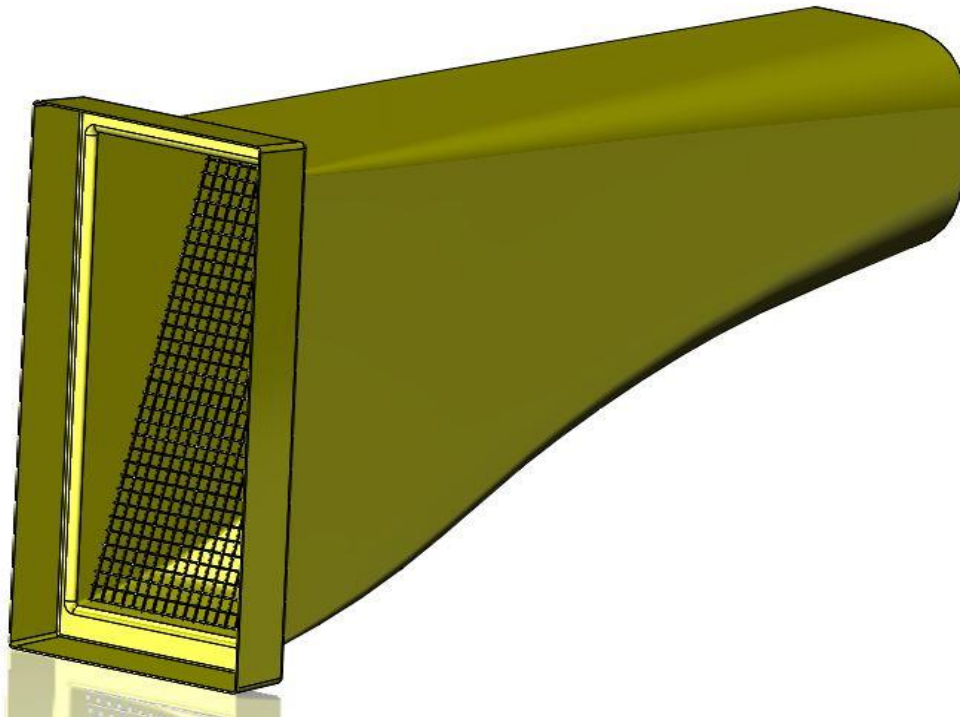
LH RADIATOR DUCT CCF4-15-039_2 STONE GUARD LH Rev 2



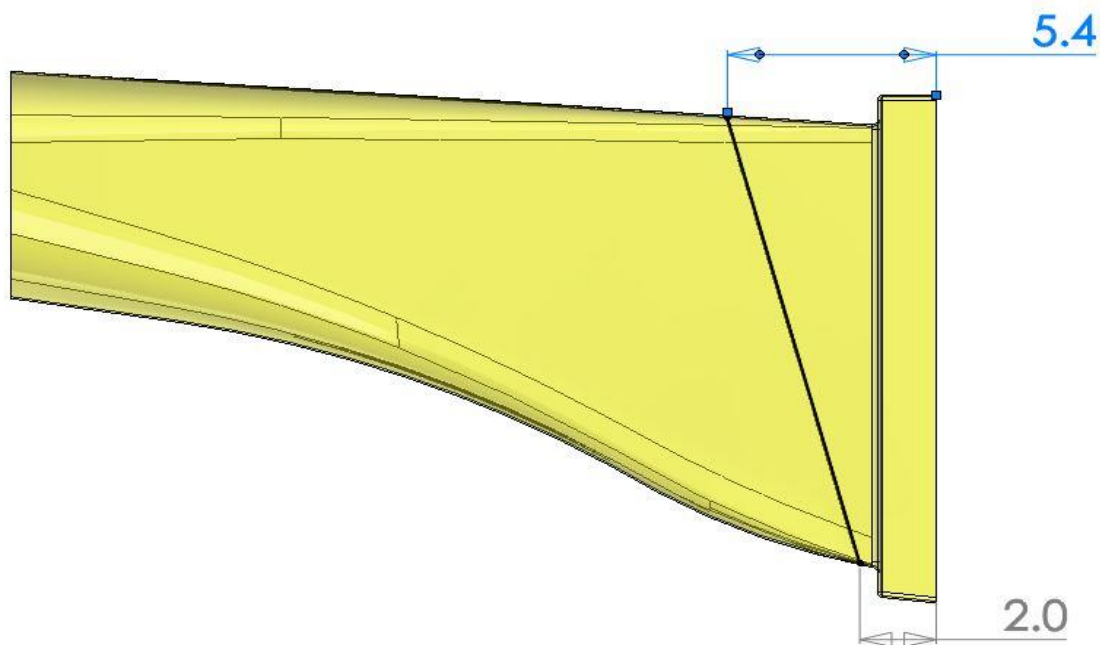
Locating dimensions



Tyrap screen to duct



Locating dimensions



Tyrap screen to duct

CRAWFORD F4

Bulletin F4.16.08.03

FRONT WING GURNEYS

1 Available

FIA homologated Aluminum front wing gurneys are now available

Two sizes 375mm x 0.30" & 375mm x 0.40"

Contact Jake Poston for details 704 483 4175 x 2346

